

WRDS-DEVELOPED DATA PRODUCTS SUITES SUPPORT ALL STAGES OF RESEARCH

SEC ANALYTICS SUITE BY WRDS

Develop tailored datasets from all SEC filings, parsing millions of regulatory reports.

This Suite enhances research as a standalone product or a complement to INSIDERS by WRDS.

- Powerful analysis of filings' contents can be combined with prominent accounting and financial market databases, including S&P Capital IQ, CRSP, LSEG (formerly Refinitiv Thomson Reuters) IBES, and NYSE TAQ
- Access over 22 million aggregated SEC filings index records from a single file
- Search through all SEC filings using the updated full-text search engine powered by the Elasticsearch platform
- Use comprehensive linking tables containing Compustat's GVKEY, historical CUSIP, and SEC's CIK to avoid survivorship bias.
- WRDS-generated sample programs available for individual modification
- WRDS SEC 13F datasets contain data parsed from Form 13F after June 2013
- WRDS SEC Readability and Sentiment data include 11 filing text characteristics, readability measures, and 16 sentiment measures



SEC FILINGS SEARCH

- Conduct sophisticated searches across full text of over 15 million SEC filings, 730 form types and filter searches
- Pinpoint results using advanced filters and syntax, and instantly view highlighted text excerpts from the original documents

SEC BAG OF WORDS

- Establish a baseline measurement using traditional models to analyze qualitative and textual data
- Readability Measures for effectiveness, clarity, and evaluation of financial disclosures
- Gauge sentiment or tone metrics in disclosures
- WRDS SEC Bag of Words Enhancement provides (unigram) word counts across all filings, or against specific company filings, allowing sentiment-on-demand analysis, and serving as input for further machine learning and other textual analytical tools



ENVIRONMENTAL SUITE BY WRDS

Analyze environmental compliance at the pollutant level as reported by the US Environmental Protection Agency.

Environmental Protection Agency

(EPA) ECHO data plays a crucial role in various research domains including economics, health, policy design, and climate research.

COVERAGE

- 1M+ regulated facilities nationwide, including information on inspections, violations, and enforcement actions
- Measurement of pollutants rather than relative scores
- Transparent definitions and assumptions defined by a regulator

SPECIALIZED PANELS WITH CUSTOM-DESIGNED WEB QUERIES

Air Panel

Links ECHO facilities to public firms, summarizing air emissions, inspections, violations, and enforcement data annually

Water Panel

Similar to the Air Panel, but focused on effluent rather than emissions, while retaining inspection and enforcement data

Facilities Panel

Organized at the facility-level, this panel transposes additional information per facility, covering all FRS facilities regulated by the EPA

Geography Panel

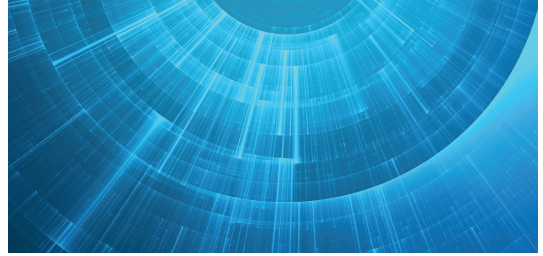
Aggregates geographic estimates of air and water pollutants at the Census Block group level, providing valuable insights for localized research



INSIDERS BY WRDS

Extensive data coverage enhances research as a standalone product or a complement to the WRDS SEC Analytics Suite.

- Identify specific indirect holdings and transactions through the Nature Of Ownership fields
- Facilitate linking with other regulatory filings using CIK and FDIC CertNo unique identifiers
- WRDS Manual details problematic cases for “adjusted” data.
- Access Rule 10b5-1 flag for SEC filings and data from the FDIC covering small banks (i.e.: Silicon Valley Bank)



EVENT STUDY BY WRDS

Measure the impact on the value of a firm resulting from events such as a change in the regulatory environment.

Analyze the market reaction to firm-specific and market-wide events including:

- Earnings announcements
- M&As
- New Capital Issues
- Announcements of macroeconomic variables

BANK REGULATORY DATA ON WRDS

Significant updates have been made to our bank regulatory data offerings at WRDS.

ENHANCED FREE BANK REGULATORY DATA

We recently updated our free Bank Regulatory dataset to incorporate new sources of data. These improvements address disruptions caused by changes in legacy data sources.

NEW BANK REGULATORY PREMIUM

Our new subscription dataset designed specifically with researchers in mind. Features include:

- Legacy-Consistent Data
- Pre-Computed Research Variables
- Exclusive Call Report Data
- New Linking Tables
- Enhanced Bank Structure Data
- New Use of Legal Entity Identifiers (LEIs)

MUTUAL FUND DATA BY WRDS

WRDS has collected N-SAR and N-CEN data for researchers interested in institutional investor, mutual fund, and ETF research.

N-SAR

Mutual Fund / Hedge Fund /
ETF Returns North America

- Registrant-series Information
- Fund Financial Information
- Fund Investment Information
- Fund Affiliated Agencies
- Fund Agency Transactions
- Fund Structures
- Linkings

N-CEN

Mutual Fund / Hedge Fund /
ETF Returns North America

- N-CEN ETF Authorized Participants
- N-CEN ETF Details
- N-CEN Fund Reported Information
- N-CEN Fund Share Class Tickers



TRADE EXECUTION BY WRDS

Trade Execution provides integrated access to standardized execution quality and off-exchange trading data from U.S. equity markets.

This product harmonizes Rule 605 reports from 16 lit exchanges and over 70 off-exchange market makers, alongside FINRA's ATS and non-ATS OTC transparency data.

- Variables related to execution quality at the symbol level and monthly frequency (e.g., average execution time and how close prices are to NBBO).
- “Market Center” locations for trades include exchanges, dealers, alternative trading systems (ATS), market makers, and ECNs (Electronic Communication Networks).

SHORT VOLUME BY WRDS

Data on aggregated short-selling activity (daily basis)

Sources for aggregated daily short volume feeds provided from 17 venues, including major exchanges, such as NYSE, ARCA, Nasdaq, and Amex, along with other exchanges (EDGX, CBOE/BATS), and TRF feeds.



CONTACT US:

WRDS | www.whartonwrds.com | wrds@wharton.upenn.edu